

CLINICAL SKILLS BLDG EMERGENCY ASSEMBLY POINT / EVACUATION PLAN

If you discover an emergency situation that requires an evacuation such as a fire:

1. Activate the nearest manual pull station, located along the exit path. This will initiate the general building evacuation alarm and dispatch the Calgary Fire Department.
2. Close door(s).
3. Evacuate the building immediately. **Time permitting take the sign in sheet out of the building.**
4. If possible, phone Campus Security at 220-5333.
5. Give your name, location, and nature of emergency.
6. Meet the Fire Department at the main entrance to the building (on the exterior) if you have information on the nature of the emergency.
7. Once you have spoken with the Fire Department (if needed), move away from the building and proceed to emergency Assembly Point and stand by for additional instructions.
8. **Do not re-enter the building** until the "All Clear" is given from the Incident Commander.
9. Building Emergency Wardens will assist in the evacuation. Provide any details on the emergency to the Building Senior Emergency Warden or the Incident Commander.
10. Proceed to the Building Assembly Point.
11. Ensure a head count is completed.

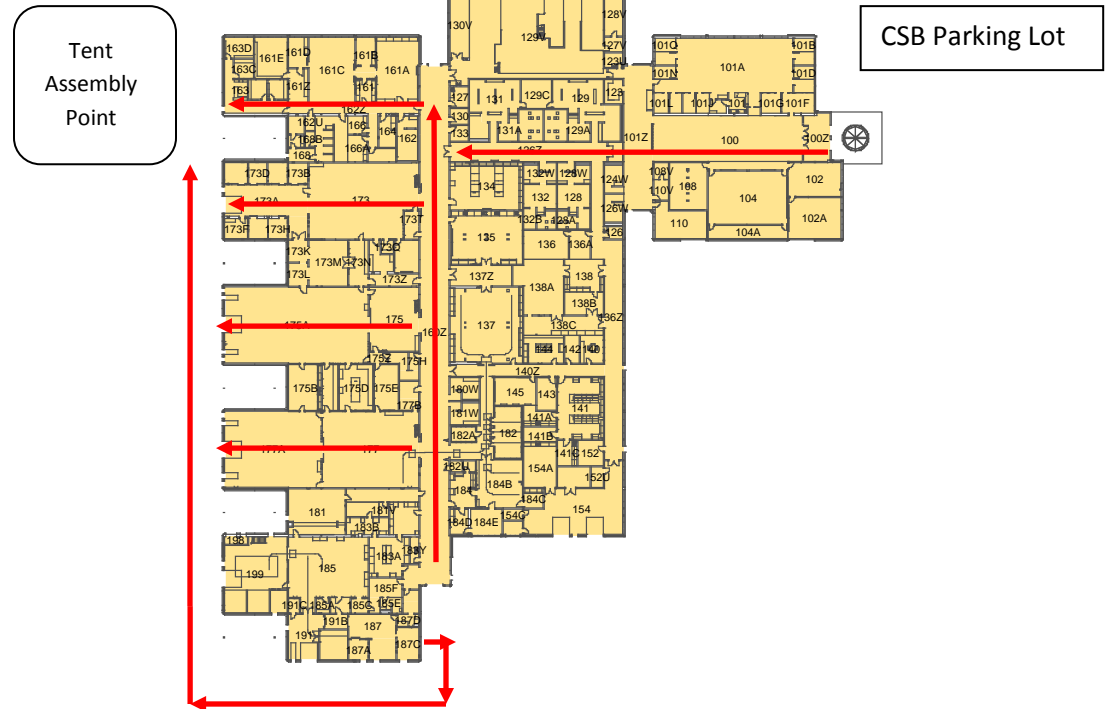
CLINICAL SKILLS BLDG ASSEMBLY POINTS

The tent directly behind the small animal ward serves as the assembly point in case of emergency.

ONE STAGE FIRE ALARM SYSTEM

The CSB is equipped with a one stage fire alarm.

Campus Security 220-5333



Poison Control 944-1414