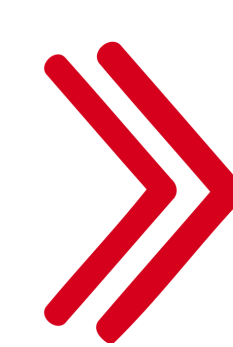
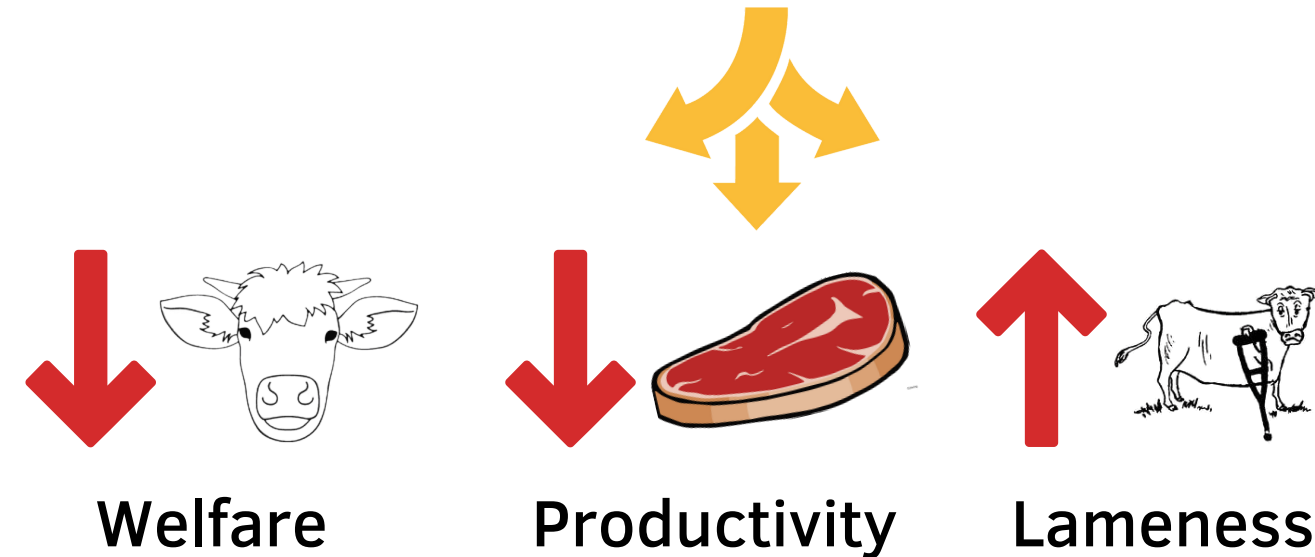
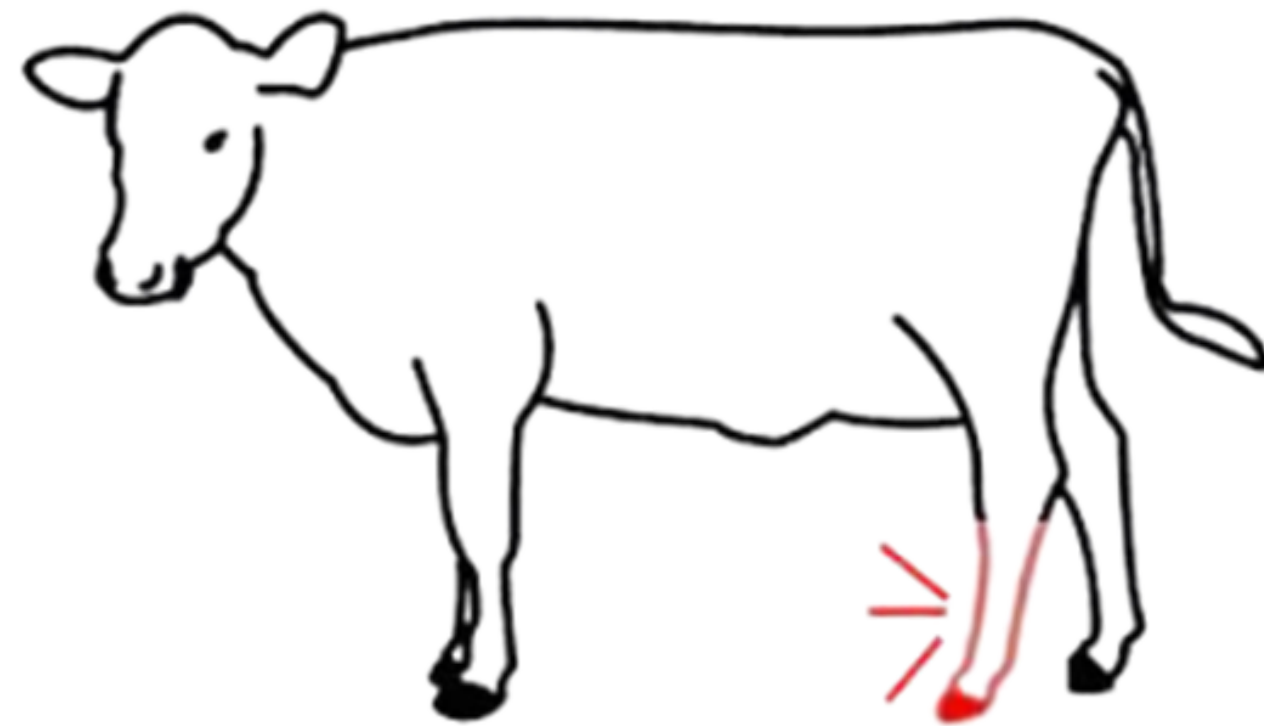
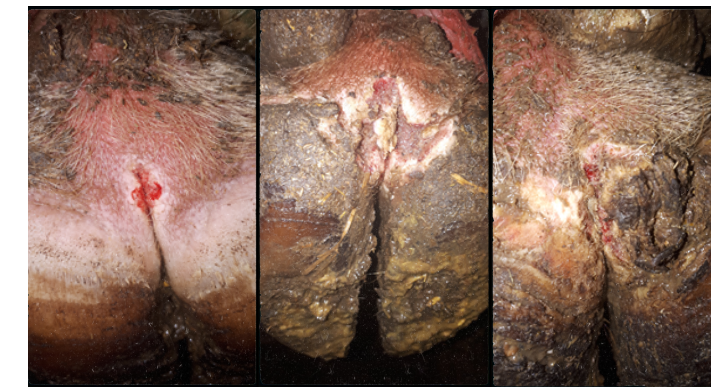
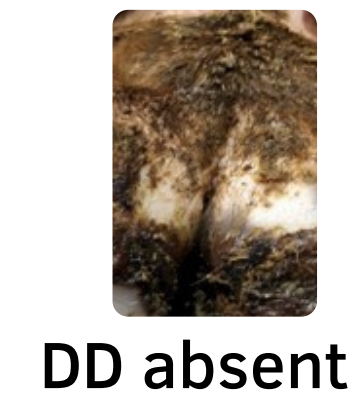


WHAT IS DIGITAL DERMATITIS (DD)

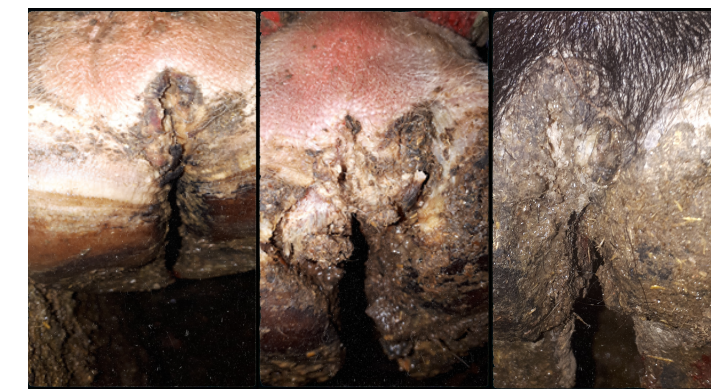
Bacterial disease affecting the feet of cattle



DD lesion stages



Active DD lesions



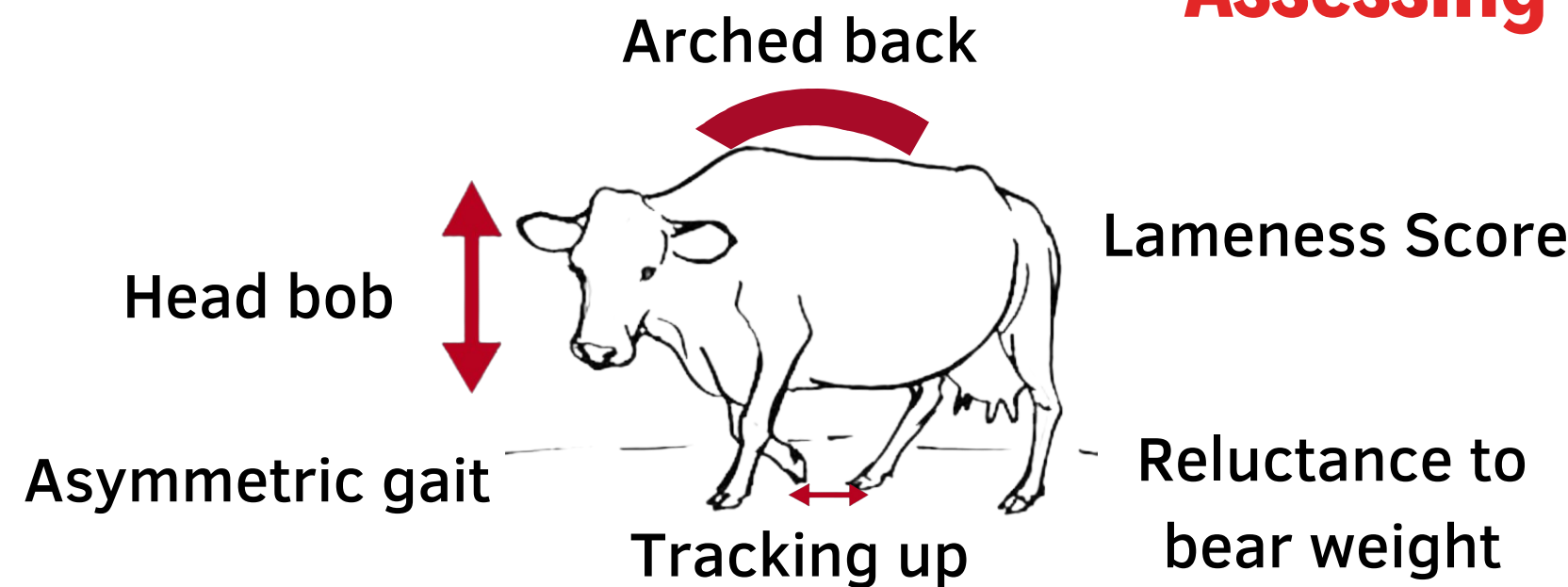
Chronic DD lesions

**DID YOU
KNOW?**



DD does not always result in lameness (deviation in gait or posture)

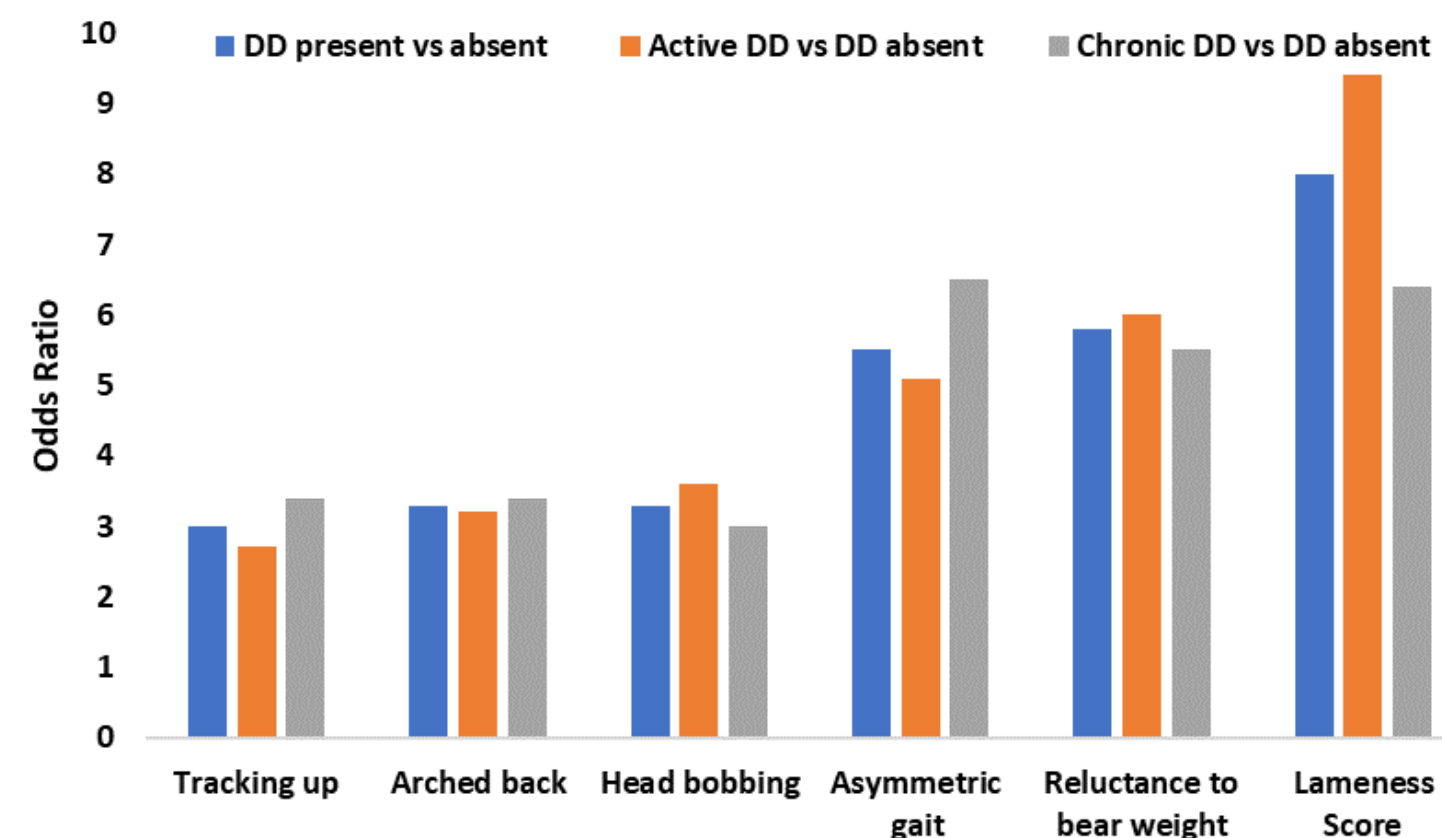
Assessing changes in gait



- Observe cattle walking on flat surface
- Use reliable scoring system

What we found:

- Beef cattle with DD have a greater odds of having altered gait and being lame
- Reluctance to bear weight and asymmetric gait had the strongest association with cattle with DD



What this means:

- Lameness score is still the best tool to detect DD
- Reluctance to bear weight and asymmetric gait should be prioritized when assessing cattle for DD