

WA Ranches at the University of Calgary

General Orientation for Visitors



**UNIVERSITY OF
CALGARY**

Content

- Ranch Overview
 - History
 - Strategic priorities
 - Staff
- Ranch Access
 - Planning your visit
 - Biosecurity
 - Waivers
- Safety
 - Livestock
 - Injuries and emergencies

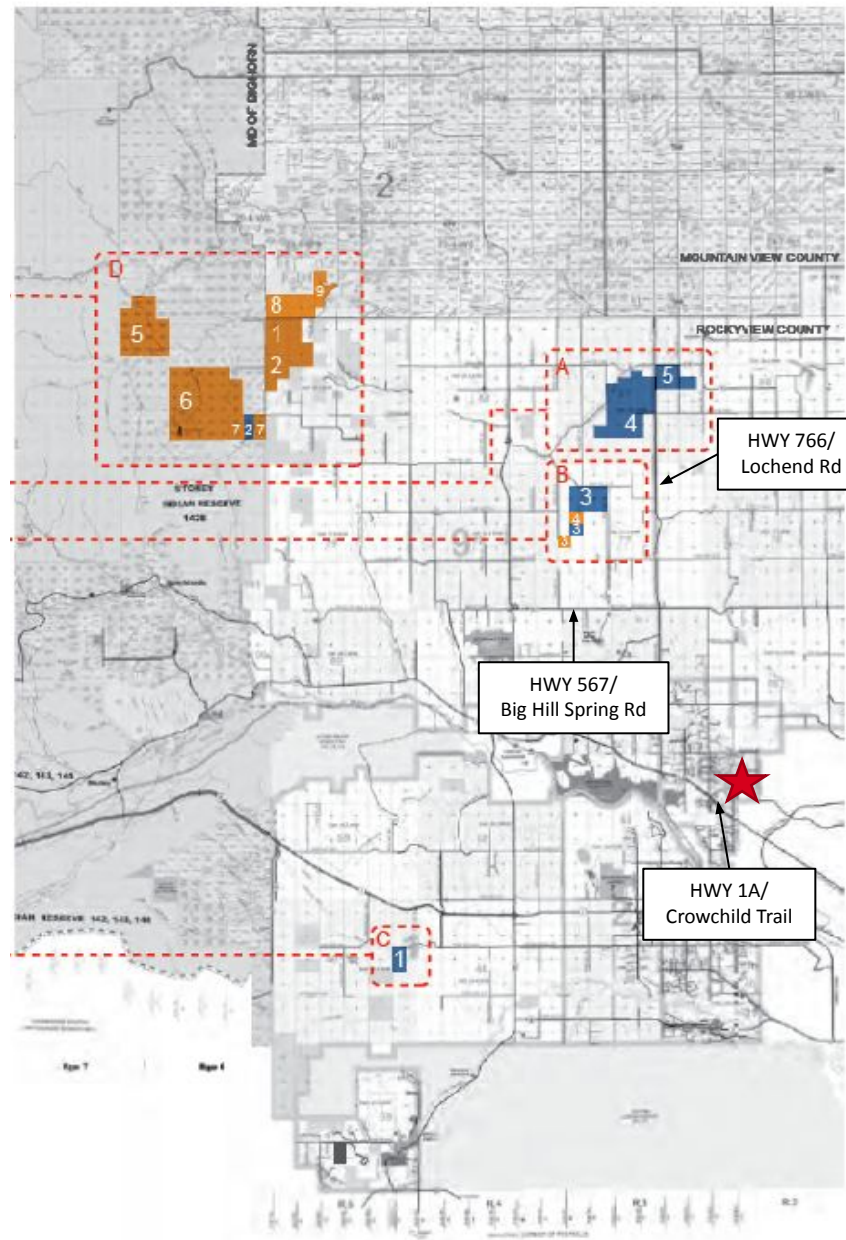
Ranch Overview

- Donated in 2018 by J.C. (Jack) Anderson and Wynne Chisholm
- Purpose of teaching, research, and community engagement
AND a commercial cow-calf ranch

Ranch Overview – land base

- 19,000 acres
- Pasture and farm land
- Wildlife habitat
- Facilities:
 - Staff housing
 - Cattle handling (main sites: Cochrane North, East, Home)
 - Equipment storage

DEEDED LANDS AND GRAZING LEASES MAP



GIFTED LANDS

DEEDED LAND

- 1 Jumping Pound Ranch
- 2 Larsen Ranch
- 3 Cochrane Home
- 4 Cochrane North
- 5 Cochrane East

GRAZING LEASES

- Rockyview County
- 1 AG Lease
- 2 Larsen lease
- 3 Anderson Lease
- 4 Nature Conservancy of Canada
- M.D. of Bighorn
- 5 Grease Lease
- 6 Edge Lease
- 7 Larsen lease
- Mountain View County
- 8 AG Lease
- 9 Fear Lease



DEEDED LAND

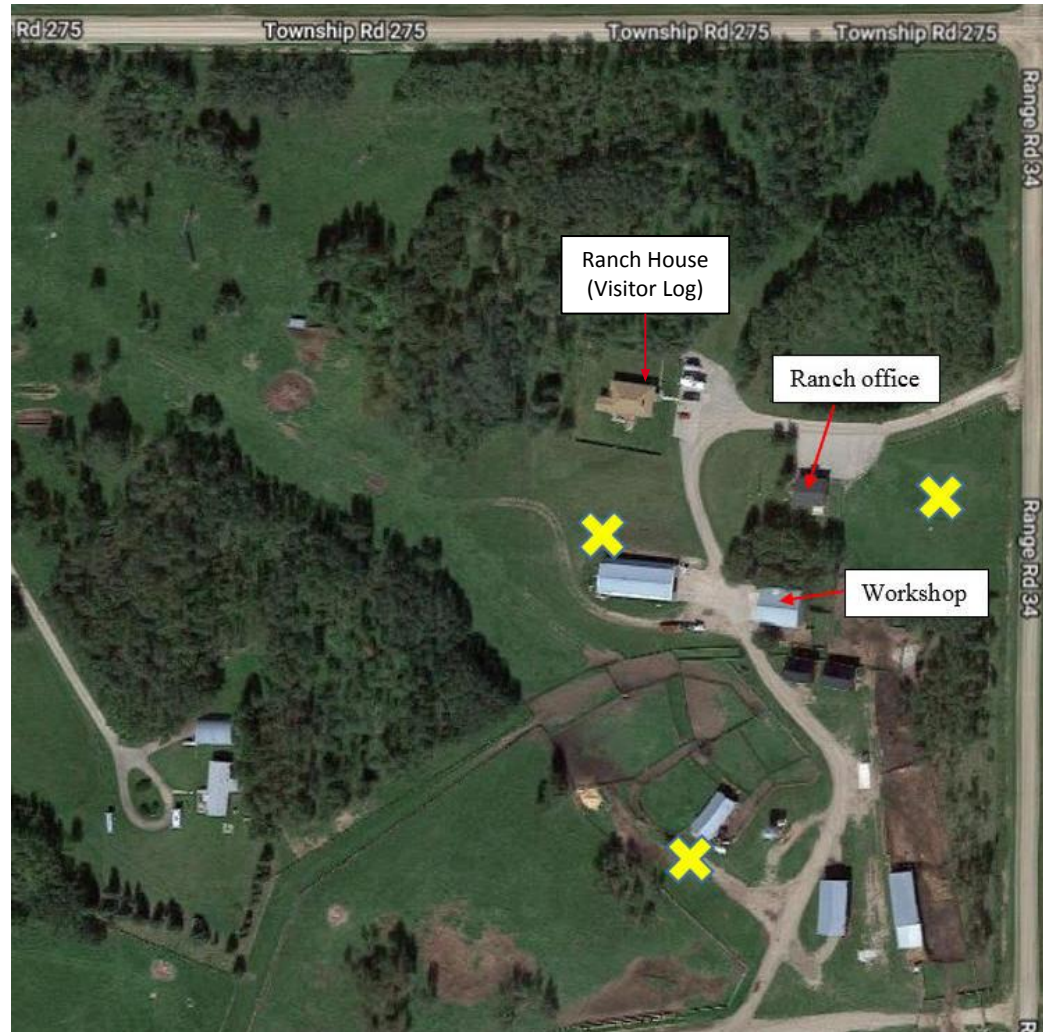
GRAZING LEASES


MAP EXTENT BORDER

SpyHill Campus



Ranch Overview – Cochrane Home



 Emergency Muster Point

Ranch Overview – The animals

- Horses
- Wildlife
- Cattle
 - Mixed angus and crossbred-based herd of mostly black cattle
 - 900+ females (cows and heifers)
 - 60+ bulls
 - Mid to late spring calving, summer natural breeding, fall weaning
 - Teaching, research, and outreach

W.A. RANCHES AT THE UNIVERSITY OF CALGARY

STRATEGIC THEMES & PRIORITIES



Ranch Overview



FACILITY PRIORITIES

IMMEDIATE

- Tent structures to provide all weather access to teaching areas (calving, pregnancy checking, bull testing).
- Improved cattle handling facilities.

SHORT TERM

- One Health/bovine teaching/demonstration facility.
- Calving barn for research and teaching.

MEDIUM TERM

- Bovine reproduction facility.
- Mixed species building.
- Office building with lab spaces.
- Retreat location with overnight accommodation.

LONGER TERM

- Equine centre.
- Biosafety research building.
- Post-weaning research pens.

Ranch Overview – Management

- Dr Ed Pajor
 - Director of W.A. Ranches, eapajor@ucalgary.ca
- Shane Royal
 - Senior Director of Ancillary Services, sroyal@ucalgary.ca
- Jonny Bennett
 - W.A. Ranch Manager, jbennet@ucalgary.ca
- Heidi Bennett
 - Cow Boss & Research Manager, heidi.bennett@ucalgary.ca
- Michelle Moore
 - W.A. Ranches Environmental Health and Safety Consultant, michelle.moore@ucalgary.ca, 403-612-4413

Ranch Access – Planning

- Prior to coming out:
 - COVID requirements
 - Activity specific (permits, approvals, FLHA, etc.)
- Upon Arrival & Departure (daily)
 - Visitor Log book sign in/out at Cochrane Home ranch house
 - Check in/out with ranch contact
- Consider:
 - Limited cell coverage
 - Wifi at ranch house via Ucalgary Guest Account
 - Bathrooms only at ranch house and office at Cochrane Home site
 - Dress for the weather and changes in weather
 - Bring food and water, stored inaccessible to wildlife
 - Bring no attractants, Leave no trace
 - Fields are only accessible by foot or pre-arranged use of ranch UTV by trained users to maintain pasture quality and biosecurity

Ranch Access - Waivers

- COVID 19 Waivers and ranch activity waivers are required for non-UCalgary visitors
- Please review UCalgary's [authorized ranch access information](#)
- Visiting group's leader to ensure that all members have completed the necessary training and forms for their group access
- All groups will be required to have an in-person safety orientation delivered by the designated ranch representative upon arriving the ranch
- If anyone has any medical conditions such as allergies that the ranch representative may need to be aware of, let them know upon arrival
- UCalgary researchers and academics must have completed
 - Field Level Hazard Assessment and Communication Plans

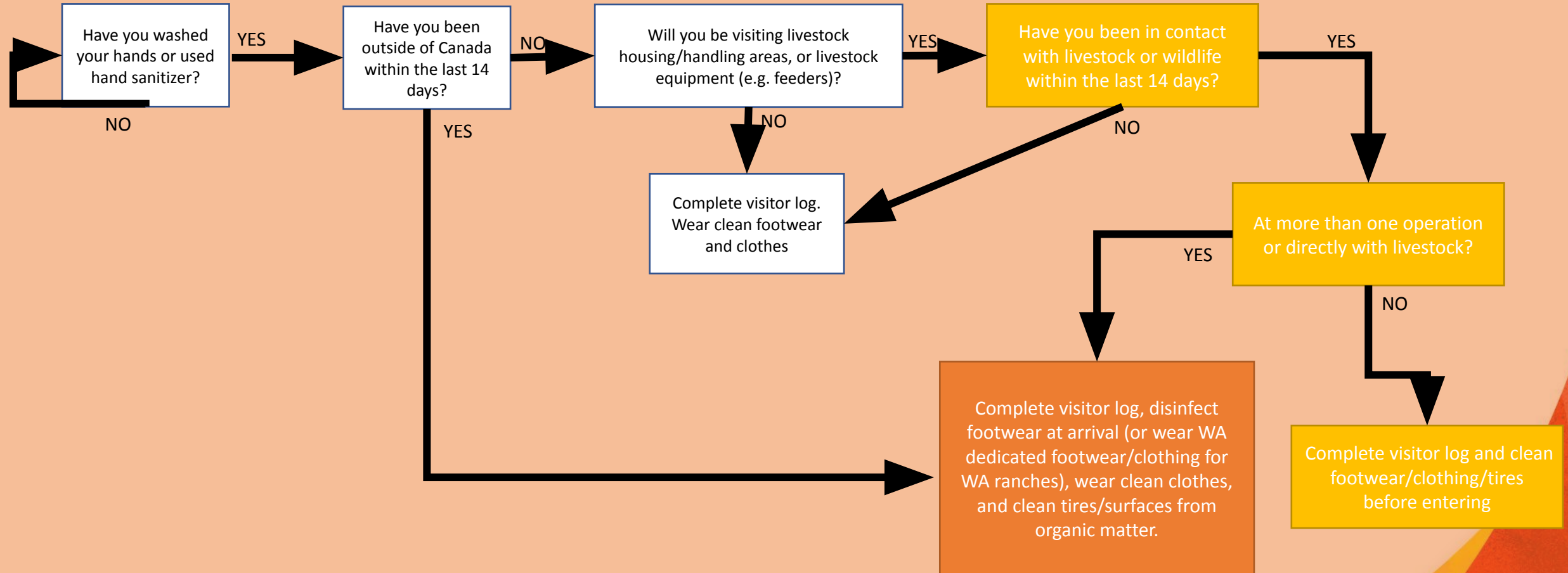
Ranch Access – Biosecurity for People



UNIVERSITY OF
CALGARY

All biosecurity practices for activities and equipment must be approved by ranch director and management prior to visiting the ranch
Visitor log is located inside the door at the ranch house at Cochrane Home site

ENTERING RANCH



LEAVING RANCH

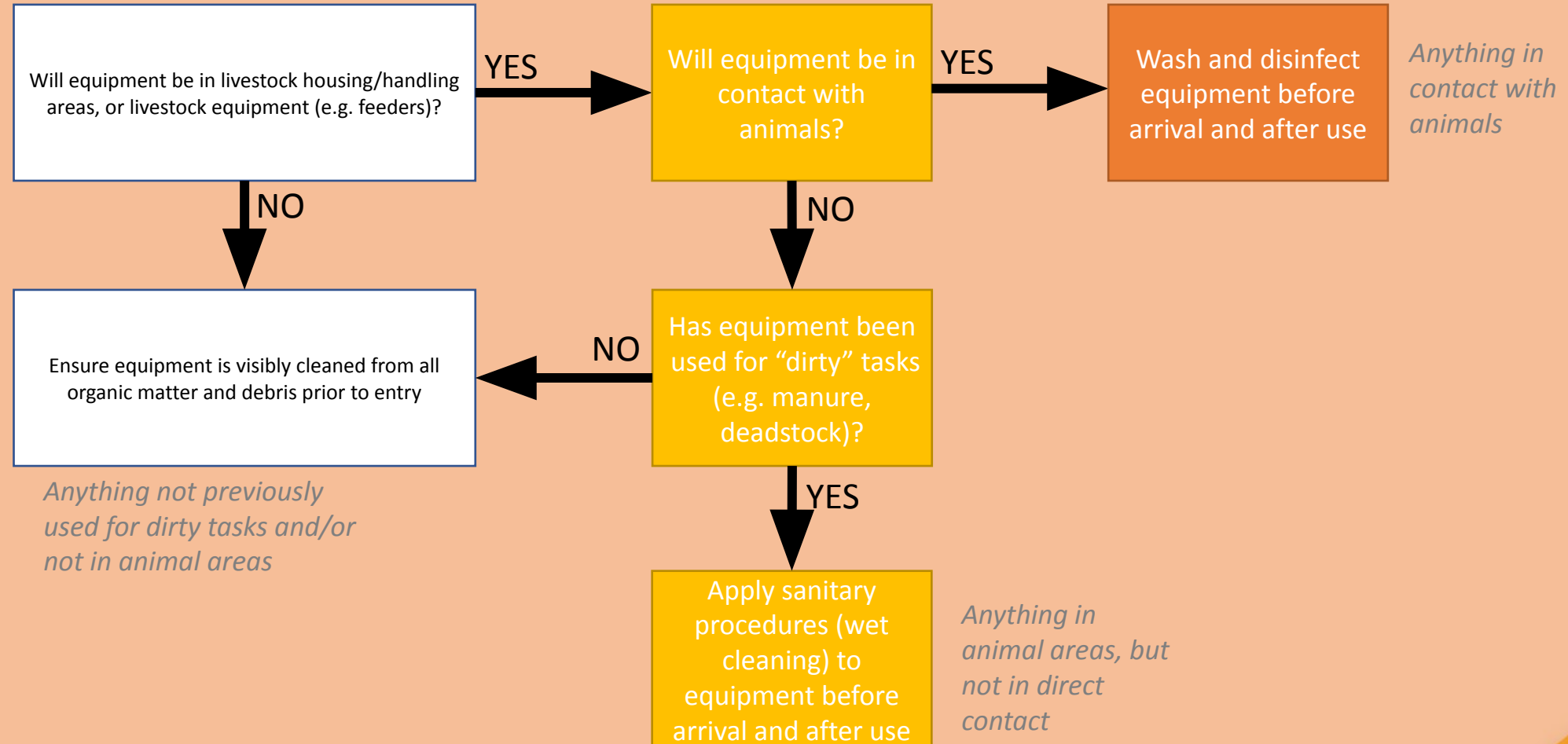
- Complete visitor log at Cochrane Home (inside ranch house)
- Clean or dispose of footwear and wash/sanitize hands
- Clean vehicles of organic matter (e.g. manure)

Ranch Access – Biosecurity for Equipment



UNIVERSITY OF
CALGARY

ENTERING RANCH



*All biosecurity practices for activities and equipment must be approved by ranch director and management prior to visiting the ranch

Safety

- Check in daily with your ranch contact
- Stay with your group and in your designated area
- Maintain 360° situational awareness at all times
- Do not touch cattle, machinery, or other equipment unless authorized to do
- Working alone in remote areas or with livestock is not allowed
 - Follow Working Alone policy requirements when working alone is done in approved situations

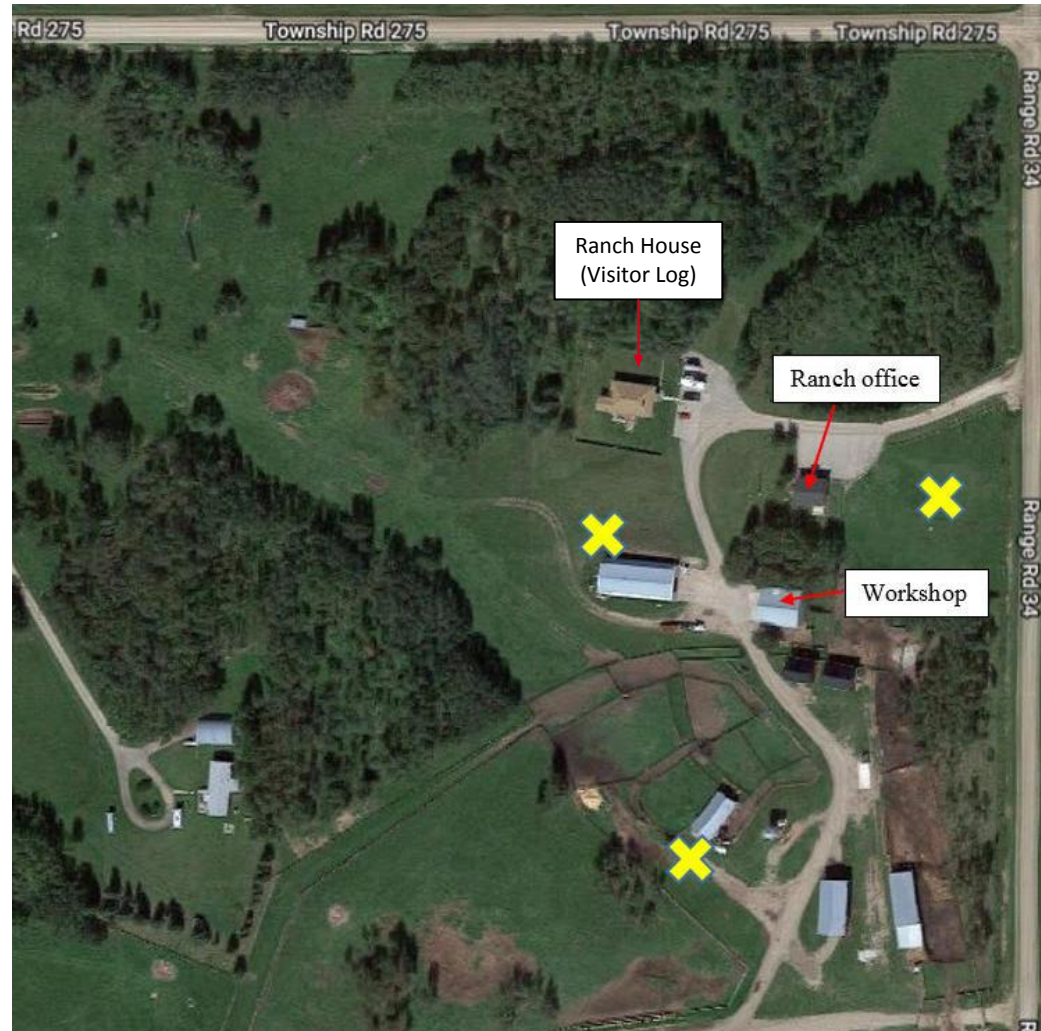
Safety – Injury or Illness


- In case of an injury or illness
 - Provide first aid or find your group's first aider
 - Report incident to your group's host, first aider, and/or ranch management (if available)
 - Ranch management (Jonny Bennett), your group's host, and first aider will handle all incidents
 - Follow all [UCalgary requirements for incident reporting](#) the day of the injury
 - The closest urgent care facility is Cochrane Community Health Centre Urgent Care
- Campus Security must be notified – they are a great resource
 - Keep their number near: 403-220-5333

Safety – Fire and Other Emergencies

- In case of a fire or other emergency
 - Stay with your group and follow instructions from ranch staff.
 - Inform ranch staff and your UCalgary host immediately if you see a fire or other emergency develop.
 - Call 911 if necessary. Ranch management will interact with 911 dispatch
- Campus Security must be notified – they are a great resource
 - Keep their number near: 403-220-5333

Safety – Cochrane Home Muster Points



 Emergency Muster Point



Safety – Livestock Behaviour

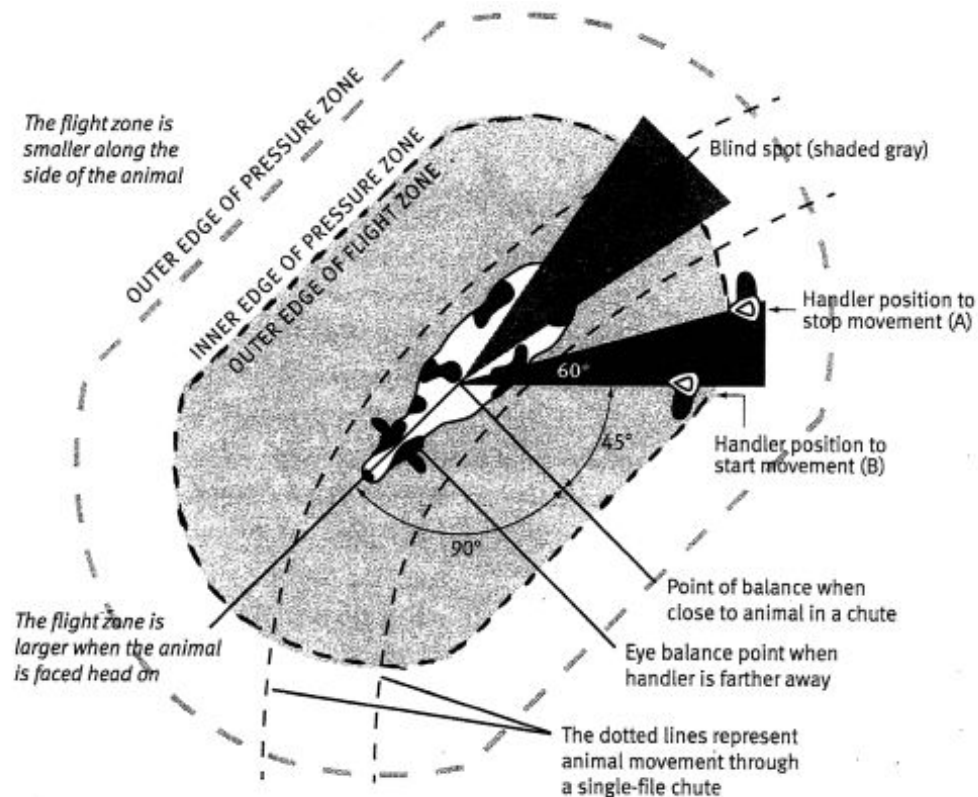
**Your actions influence
the welfare of our animals,
the business of the ranch,
and everyone's safety**

Safety - Livestock

- Key things to remember about cattle are:
 - They are a herd animal and a prey species, with a wide field of view and blind spots
 - Act calmly and quietly
 - Be aware of how you approach animals, even if it is as simple as walking past their pen
 - Cattle are individual animals – they are not all the same.
 - Be vigilant
 - Watch cattle for behavioural signals
 - Practice situational awareness in 360° at all times
 - Know what is going on around you
 - Do not engage in distractions when around livestock or equipment
 - Ask, ask, ask...tell, tell, tell
 - If you are uncertain or see something of concern, talk with your ranch representative or nearby ranch staff. We are here to support you and our animals!



Safety – Cattle Perception



- Varies with
 - Individual animal temperament
 - Experience – life history and current events
 - Environment
 - Facilities
 - Group size and herd mate behaviour
 - Distractions
 - Handler(s)

FLIGHT ZONE AND POINT OF BALANCE. To move a single animal forward, the handler must be behind the point of balance and stay out of the blind spot directly behind the animal. When the handler is close to the animal, the point of balance is at the shoulder. When the handler is farther away, the point of balance may move forward to just behind the eye. When the handler is on the outer edge of the pressure zone, the animal becomes aware of the handler's presence and turns around and looks. When the outer-most edge of the flight zone is penetrated, the animal moves away.

<https://www.grandin.com/behaviour/principles/flight.zone.html>

Safety – Wildlife Awareness

- The region around the ranch is home to a variety of wildlife such as bear (grizzly and black), moose, cougar, lynx, wolves, and coyotes.
 - Be aware of your effect on wildlife – bring no attraction, leave no trace
 - Be aware when you are in pastures, leases, etc. of potential for wildlife encounters and appropriate behaviours to mitigate risk during those encounters
 - Depending on the activity, leaders and/or participants may be required to complete Wildlife Awareness training at their expense, to be discussed during activity planning with the ranch director and management
- Please report sightings of large predators (e.g. bears, wolves, cougars) to your designated ranch representative and ranch management