



# HUNTING SEASON IS UPON US!

## WILDLIFE HEALTH MONITORING

Please inform your local Environment and Natural Resources (ENR) office of any abnormalities and bring photos of the specimen to your local ENR office.

### AFFECTED AREAS SHOULD NOT BE EATEN

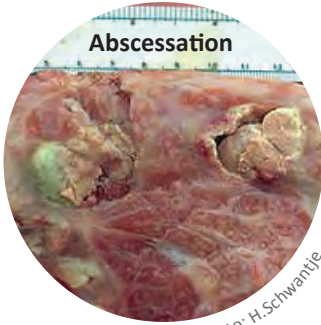


Photo: H.Schwantje



Photo: University of Saskatchewan



Photo: S. McBurney

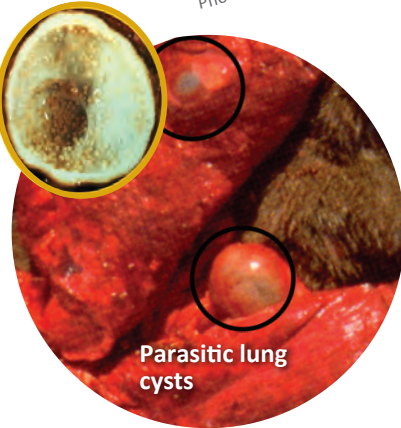


Photo: M. Male



Photo: M. Male



Photo: M. Male

DISEASES/PARASITES TO LOOK OUT FOR WHERE AFFECTED AREAS SHOULD NOT BE EATEN AND SAMPLES SHOULD BE BROUGHT IN AND REPORTED

### DO NOT AFFECT QUALITY OF MEAT



Photo: M. Male



Photo: M. Male



Photo: M. Male

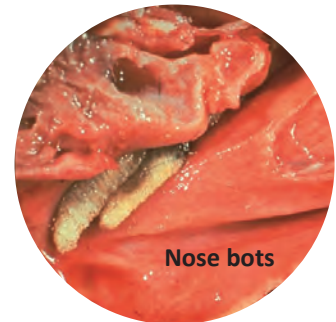


Photo: M. Male

DISEASES/PARASITES TO LOOK OUT FOR THAT ARE COMMON BUT DO NOT AFFECT THE QUALITY OF THE MEAT

All photos credit to GNWT, unless otherwise indicated.

For more information, contact:

For more information on the GNWT Wildlife Health Program, contact:

Government of Northwest Territories